

Tricol Clean[®]



rPET

Powered By

Recycled Microfiber

USA Sales and Distribution **Leading Edge Products, Inc.**



The Future of Microfiber Has Arrived.

With the introduction of our newest member of the Intelligent Microfiber Collection, Tricol Clean is transforming the way society thinks of microfiber. We've engineered polyester from recycled plastic bottles into the next generation of premium quality performance microfiber. Now is the time for you to play your role in the circular economy.

Stand for Sustainability

Rather than the traditional manufacturing model of "Make, Use, Dispose", we're focused on remaking, reusing, and recycling. Leveraging products that use up to 80% recycled polyester (rPET) in our Intelligent Microfiber Collection, we're transforming the microfiber industry to stand for sustainability. Our microfiber products are certified under the Global Recycled Standard (GRS), guaranteeing that each product is made from certified-recycled materials.

Powered by Conscious Consumption

Sustainable living is no longer aspirational. All of our home textile and cleaning products can be made from rPET. We only make high quality products that are durable & long-lasting, from materials that are better for the environment and reduce end-user impact on our planet.



Tricol Clean[®]



rPET

Powered By

Conscious Consumption

What is Recycled Polyester?

rPET is polyester made from recycled plastic bottles. Each time you recycle a soda bottle, you're helping us transform it into something new. It's also one less piece of trash headed for the ocean and an all-around cleaner environment.

What is Conscious Consumption?

Conscious consumption is the radical act of considering the environmental impacts of a product as central to the consumer's purchase decision. As we become evermore aware of the environmental impacts of CPGs, we begin to see how our consumer choices affect the world around us. It's still much easier to buy non-recycled products than to buy ones made from recycled materials. But will that always be true?

Did You Know....

1 lb of recycled polyester

- Eliminates 50 lbs of water during spinning and dyeing
- Eliminates 4 lbs of steam during spinning and dyeing
- Eliminates 3.5 lbs of energy consumption instead of producing new PET chips

END USER BENEFITS



1. Less Reliance on Petroleum

By avoiding the intense processing of petroleum into virgin polyester, rPET reduces energy consumption by up to 6 tons of fossil fuels when compared to normal polyester processing.



2. Less Plastic in Landfills

Each time you recycle a plastic bottle, you're diverting waste from the landfill and contributing to less air and water pollution, as well as soil contamination.



3. One Step Closer to Zero Waste

When recycled polyester can be used to power more products in our daily lives, together we can be one step closer to living in a zero waste society.

Tricol Clean[®]



Powered By

Conscious Consumption

How do we make Recycled Microfiber?

Recycled Combination Microfiber starts with your efforts to recycle. rPET is made from recycled plastic bottles, used for soda and water worldwide. By recycling these products, the entire process begins:



Step 1	Step 2	Step 3	Step 4
The collected PET bottles are sterilized, dried and crushed into small pieces.	Small pieces are melted and made into rPET chips.	rPET and PA6 chips are forced through the spinneret to form filaments. POY →DTY	The rPET/PA6 DTY filaments are used to weave and knit mats, mops or other products.

ECO-BENEFITS

1 Ton of Recycled Polyester Production*

- Saves 1.5 tons of oil resources
- Reduces coal consumption by 2 tons
- Reduces dust emissions by 60 kg
- Reduces slag by 288 kgs
- Reduces wastewater effluent by 50 tons
- Reduces steam consumption by 4 tons
- Reduces sulfur dioxide emissions by 48 kg

* Based on the production of 1 ton of 100% polyester fiber made from rPET

Tricol Clean[®]



rPET

Powered By

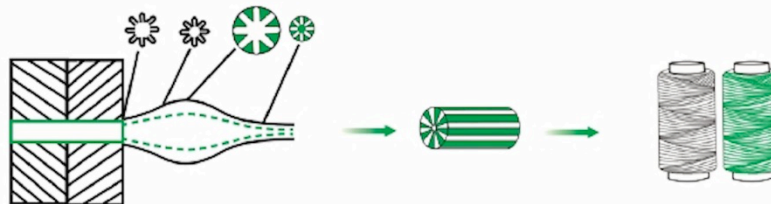
Conscious Consumption

Our Masterbatch Process

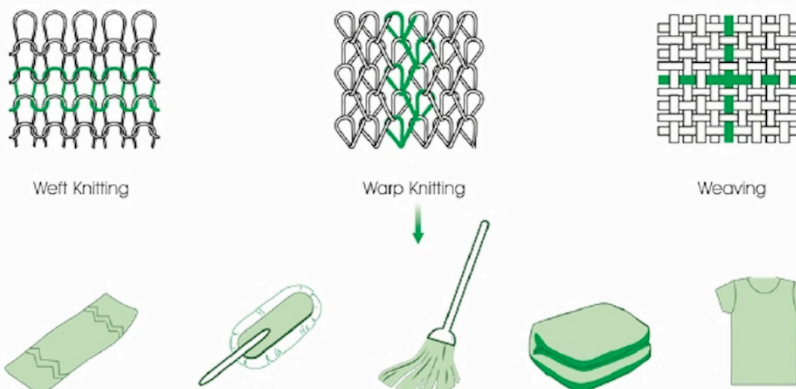
Starts with raw materials



Chips extruded into filament (melt spinning)



From filament to fabric



Tricol Clean[®]

Powered By



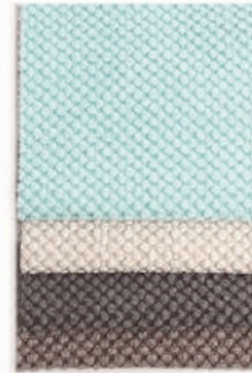
rPET

Conscious Consumption



Filaments

100% rPET, 80% rPET / 20% PA6



Knitted Fabrics

70% rPET / 30% PA6
(+ Silver Ion Technology)



Woven Fabrics

70% rPET / 30% PA6
(+ Silver Ion Technology)



Rugs & Mats

100% rPET



rPET



TRICOL GROUP

Creating a Comfortable World



Tricol Clean® everplush®

Global Headquarters

Jiankang East Street, no 6888
Weifang, 261205, Shandong, China

p: +86-536-610-1088
f: +86-536-610-1026

www.tricolgroup.com
www.tricolbiomedical.com
www.Everplush.com

Tricol Clean Office

18848 13th Place South
Seatac, WA 98148

1-206-244-0585
info@tricolclean.com

Tricol Biomedical Office

720 SW Washington St, Suite
200 Portland, OR 97205

1-206-244-0585

US Sales and Distribution

Leading Edge Products, Inc.
12650 Brookprinter Place
Poway, California 92064

858-576-8542
Sales@lepusa.net